

Alumni Weekend.....	2
Undergrad President.....	2
Annual Fund.....	2
In Memory.....	3
President's Report.....	3
Alumni Updates.....	4

# THE DELTA DIAL

December 2006

Delta Chapter of Theta Chi Fraternity at Rensselaer

## Alumni Profile

### A Driving Force in Technology: Brother Charlie Tracy '64 Charlie Oversaw and Participated in Big Changes in the Automobile Industry

The next time you turn the key in your GM car or truck, you may want to give a mental "thanks" to **J. Charles ("Charlie") Tracy '64**. After all, Charlie's leadership contributed to GM's electronic revolution in the late '80s and early '90s, resulting in "smarter", cleaner and more reliable cars.

Charlie Tracy chose RPI for its reputation as a top engineering school, but was also involved in both campus and fraternity life. On campus, he eventually served as Chairman of Grand Marshall Week, while at Delta Chapter

he was Chapter Secretary as well as manager for classmate Gordy McIntosh's successful Grand Marshall campaign and QB of Theta Chi's extraordinary interfraternity football team. (**Dean Latsch '66** remembers that Charlie could pass farther than anyone else; and since **Jay Jackson '66** could run faster than anyone else, the two were a formidable, winning combination). Despite a busy schedule, Charlie kept his grades up and was inducted into the engineering honorary Tau Beta Pi. It was also while at RPI that Charlie met his wife, Charlotte Shaw Tracy, a 1966 graduate of Russell Sage.

Charlie earned his PhD in Applied Physics from Cornell, and eventually joined GM's Detroit Research Lab. The Lab produced groundbreaking technologies in the '70s, such as the catalytic converter and closed loop engine controls for passenger cars. Before long, Charlie was named Assistant Head of the Physics Department (1975) and then Head of the Electronics Department (1982). From 1985-92, when "modern" electronics allowed for quantum leaps in vehicle performance and reliability, he held positions at GM's Delco Electronics division as Chief Engineer in three different business units.

In 1992, Charlie and Charlotte returned to the Northeast so Charlie could accept a general management position with Carrier Corporation, a division of United Technologies Corporation. In just 8 years he served in several increasingly responsible

management roles in the U.S. and abroad, including President, Carrier Components and Director of UTC's Research Center, where he led a staff of 700 scientists and engineers. Although retired from UTC in 2000, Charlie stays active as a Visiting Scientist and Adjunct Professor in Cornell's Department of Materials Science and Engineering. He has authored more than 30 publications in professional journals, received five patents and became a Fellow in the American Physical Society. In 2002 Charlie also received the Rensselaer Alumni Association Fellows Award, which honors alumni whose achievements set an example for future Rensselaer alumni.

A generous supporter of Rensselaer and Delta Chapter, Charlie is a member of RPI's Palmer C. Ricketts Society of Patrons, and is one of the top five contributors to Delta Chapter's Scholarship Fund, administered through Rensselaer.



**Charlotte and Charlie Tracy**

Charlie and Charlotte currently reside on Narragansett Bay in Bristol, Rhode Island. They have three grown children and four grandchildren. They would be happy to share memories and offer hospitality to any Delta Chapter alumnus who may be in the area. You can write to Charlie at 20 Monkey Wrench Lane in Bristol, RI 02809-2911 or email him at: [charlietracy@att.net](mailto:charlietracy@att.net).

## Newly Elected Undergrad Officers

**President**  
**Brandon Bradley**  
(bradlb2@rpi.edu)  
Senior

**Vice President**  
**Sean Piela**  
(pielas@rpi.edu)  
Sophomore

**Steven Maruffi**  
**Treasurer**  
(marufs@rpi.edu)  
Sophomore

**Secretary**  
**James Porambo**  
(poramj@rpi.edu)  
Junior

**Pledge Marshall**  
**David Walker**  
(walked@rpi.edu)  
Junior

# Alumni Weekend

## Alumni Weekend Returns! Brothers Reunite for a Weekend of Reminiscing, Tailgating, and Fun Over 50 People Attended the Saturday Semi-Formal Dinner

By Kevin Solli '02

On the weekend of Friday, October 27 and Saturday, October 28, Alumni Weekend returned to Delta Chapter after a five-year hiatus. The festivities began Friday night as some of our younger alumni congregated at "The Ruck" (formerly Sutters) for some wings and "a drink or two". A brunch held at the House Saturday morning gave alumni the opportunity to look at old photo albums and share stories about the House. By 11:00 AM, the North Lot started to fill up as our tailgate party began. The rain didn't stop us; in fact,

we had over 40 alumni present to watch our RPI Engineers beat WPI to retain the coveted Transit Trophy. After drying off, alumni and their guests attended a semi-formal dinner at "Browns Brew Pub". Over 50 people were in attendance for the dinner, and alumni partied late into the evening. It really was a great event, and we hope next year will be even more successful. The next Delta Chapter Alumni Weekend will be October 19–21, 2007. See you then!



# Undergrad President's Report

## A Quiet But Productive Fall at the Chapter House Active Brothers Make Strides in Home Improvement and Prepare to Support Capital Campaign

By Dave Walker '08

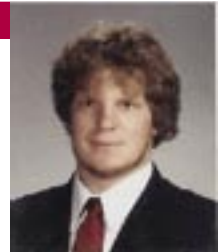
This fall semester has been relatively quiet. The undergraduate brotherhood focused on addressing issues regarding the house itself, with significant success. We've installed new energy saver lights all throughout the house to help keep electric costs down as well as replaced light switches, repainted bathrooms and painted the hallways.

Alumni Weekend this year was especially successful, and everyone enjoyed the weekend's events. It's noteworthy that this year's defeat of Union was sealed by brother **Vincent Sciccitano's** timely interception.

The active brothers are excited about the upcoming capital campaign, and listened intently as Bob Baney from Affinity

Connection visited the house in November to outline the campaign's general direction. We offer our support in whatever ways we can to make the capital campaign a rousing success.

I'm glad to report that the House GPA for last semester was 3.01, which was an improvement over the previous semester. We are looking forward to finishing the year with additional community service and to our new executive board continuing our efforts to maintain the Delta Chapter values and traditions.



# Annual Fund

## During this Season of Friends, Family and Fond Memories, We Hope You'll Remember Your Delta Chapter "Family"

The Delta Dial, along with our other annual alumni communications and our Delta Chapter website, are funded solely by the contributions of our readers, most of whom are alumni.

If you've donated to our Annual Fund recently, please accept our sincere appreciation. If not, we hope you'll consider making a gift to Delta Theta Chi Corporation

to benefit Delta Chapter, so the Delta Dial and other communications can continue to bring you news of the entire brotherhood.

Included with this edition of the Delta Dial you'll find a letter explaining how you may "Extend a Helping Hand" by extending a very helpful donation. In this latest Annual Fund update, we in turn extend our thanks and recognize those who have chosen this way

to help keep their bond with Delta Chapter strong. The Honor Roll includes brothers from all decades – so you're sure to see names from *your* particular time as an undergraduate brother that will bring back warm memories of formative years.

During this season, we all give thanks for having friends and family who have helped make us who we are. When you think about it, Delta Chapter is actually like friends *and* an extended family, who wish you a merry holiday season and the very best for the coming New Year.

# In Memory

## Theta Chi Mourns the Passing of Graham Williams '52, Whose Active Involvement Touched Many Brothers Graham Mentored Others as a Professor, Brother, and Friend

**Graham Williams '52**, Professor Emeritus of Architecture at RPI, died unexpectedly on May 5 of this year.



**Graham Williams '52**

Graham earned his Bachelor's and Master's degrees in Architecture at RPI. After time in the Navy and in private practice, he joined the RPI faculty in the early 1960s and taught for 35 years. He also had an active architectural practice, designing residential, religious and educational buildings. Many of

our alumni also know that his firm designed the Chapter House at 2100 Burdett Avenue. Graham was active in many endeavors in the Troy area and was instrumental in establishing the Rensselaer County Council for the Arts. He was a lifelong sailor and started the sailing program on Forest Lake, where his family resided each summer.

In the true spirit of "Alma Mater first, and Theta Chi for Alma Mater", Graham was the President of the RPI alumni class of 1952 and was extremely active in alumni activities throughout his life.

So many Theta Chi brothers were touched by Graham. Here's a personal tribute from one of them:

*"Everyone who had the opportunity to*

*know Graham, experienced his genuine caring, gentleness and graciousness. I had the extraordinary good fortune to know Graham as a Professor of Architecture, fraternity brother, professional colleague and personal friend. Graham unselfishly extended a helping hand to me when, as a professor, he taught and encouraged me as a student; as an alumni board member, he guided and advised me while I was an undergraduate officer of the fraternity; and as a fellow architect, he mentored and supported me during the development of my professional career after I made my home in Albany's Capital District. Graham had a profound impact on my growth as a person and a professional. Knowing him will always remain one of the fondest memories of my Theta Chi experience."*

– **Greg Seleman '72**

Graham is survived by his wife of 52 years, Patty; two daughters; two grandchildren and several siblings.

## President's Report

### New Board Members and Advisors Take on Challenges and Show Dedication

#### Second Century Program Now One Step Closer with Your Support

I am proud to announce our newest board members. In June, **Jim Shertzer '98** and **Kevin Solli '02** were unanimously elected onto the Board. Both have already made their presence known with positive contributions to our efforts. I am also pleased to announce that **Ray Moran '91** as Vice President, and **Bob Wright '72** as Secretary have boldly stepped into leadership roles on the Board.

Your Alumni Board now consists of:

- **Greg Willmott '87**, President
- **Bob Wright '72**, Secretary
- **Ray Moran '91**, Vice President
- **Bill McIntyre '74**
- **Scott Virkler '87**
- **Paul Silhan '71**
- **Jim Sertzer '98**

- **Kevin Solli '02**

Our dedicated group of Advisors now consists of:

- **Rich Boroway '73**, Treasurer, Financial Advisor and AIGC Representative
- **Rich Bollam '66**, Scholarship Fund Advisor
- **Greg Hughes '67**, Faculty Advisor
- **W. Everett Molony '63**, CIP Fund Manager
- **F. Terry Jones '66**, Fund Raising Advisor
- **Scott Campbell '90**, Chapter Advisor

I would also like to thank **John Auletta '93** and **Mike Emr '93** for their dedicated service and leadership to the Board during the past four years.

We successfully completed the feasibility phase and have moved into the formal phase of our Second Century Capital Campaign. I encourage everyone to continue checking the chapter website ([www.deltachapter-thetachi.org](http://www.deltachapter-thetachi.org)), your mailbox and future *Delta Dials* for additional details on how you can support this important effort.

It was great to see over 50 alumni return for Alumni Weekend in October. Huge thanks to Bill McIntyre '74 and Kevin Solli '02 for their efforts in restarting this great tradition. Mark your calendars now for next year's event – October 20, 2007.

On behalf of the Board and Advisors, I wish everyone a happy and healthy holiday season and a great 2007.

Fraternally,

**Greg Willmott '87** (Wilmo)  
President, Delta Theta Chi Corporation  
[gwillmot@nycap.rr.com](mailto:gwillmot@nycap.rr.com)

# Alumni Updates

## '60s

**Rowland C. Carlson '60** wants to share his new contact info:  
Rowland C. Carlson, 2 Fleetwood Drive,  
Palmyra, VA 22963-2652;  
rowlandcc@aol.com  
(434) 589-4354

## '70s

**Joseph P. Schewe '77** wants to share his contact info:  
Joseph P. Schewe, 14 Ramble Lane, Burnt Hills, NY 12027; josschewe@yahoo.com.  
Home phone: (518) 399-5854  
Cell phone: (518) 339-0342

## '80s

**James Fortune '80**  
(35 Shepherd St., Foxboro, MA 02035; fortunes35@comcast.net) As our company was acquired by Tyco Healthcare, I am back in the job market. I plan to spend this time with my

daughters (10, 8 and 3). If any brothers in the Boston area want to grab a drink, give me a call. I'll have plenty of time!

## '90s

**Christopher Mattei '90**  
(1408 Essex Cir., Ridgecrest, CA 93555; mattei7565@yahoo.com) We have moved again—life in the Marine Corps! Myself, Jenn and our children (Megan, Mark and Cal) now live in Ridgecrest, CA, aboard Naval Air Weapons Station, China Lake.

## '00s

**Brendan Witherell '02**  
(215 Kings Highway Apt. C-6, West Springfield, MA 01089; dubs16@yahoo.com) I will be graduating from Western New England Law School in the spring and begin working for Robinson and Cole LLP in Hartford, CT in their Intellectual Property Division.

**Jim Adams '05**  
(P.O. Box 507, Heber Springs, AR 72543; (315) 842-0997; james.p.adams@gmail.com) I'm enjoying working in Arkansas for Roland Garlinghouse and Gar-Bro Manufacturing.

## IN MEMORIAM

Since the publication of the last Delta Dial, we have also learned of the passing of the following Brothers:

**L. Merrick Bryce '44**  
**Robert G. Ross '53**

Theta Chi mourns the loss of these brothers and extends sympathy to their friends and families.

## Where Have You Been?

Do you have memories from your days at the House you'd like to share? Do you regularly get together with your brothers? Moving? New job? Recently retire? Get married or have a kid on the way?

Submit your alumni update now by emailing [paulsilhan@hotmail.com](mailto:paulsilhan@hotmail.com). And be sure to visit the Delta Chapter website at [www.deltachapter-thetachi.org](http://www.deltachapter-thetachi.org) for alumni email addresses, updates on events, photos, Centennial information and more.



973-013 FN

*Did you miss all the fun during Alumni Weekends?  
Details on Page 2!*

Address Service Requested

Albert Lea, MN 56007-8007

Alumni Relations Processing Center  
P.O. Box 7007**at Rensselaer****Delta Chapter of Theta Chi Fraternity**

PERMITTED  
FIRST-CLASS MAIL  
U.S. POSTAGE  
PAID  
MILWAUKEE, WI  
PERMIT NO. 3242